

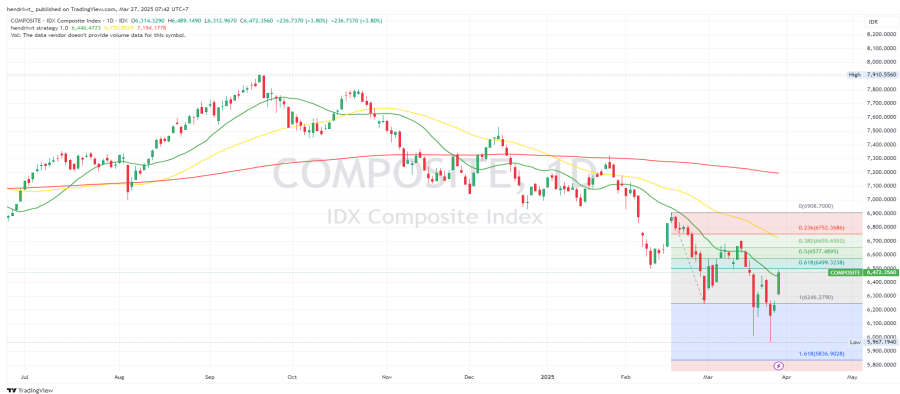
<b>IHSG</b>	<b>6,472</b>
Change (%)	<b>3.80%</b>
Net Foreign	<b>-30.54 T</b>
Support	<b>6400</b>
Resistance	<b>6500</b>

Sectoral	Last	Change %
IDX:IDX BASIC	1,031.0	<b>4.31%</b>
IDX:IDX CYCLIC	711.3	<b>2.05%</b>
IDX:IDX ENERGY	2,366.1	<b>2.51%</b>
IDX:IDX FINANCE	1,334.2	<b>3.60%</b>
IDX:IDX HEALTH	1,237.1	<b>0.11%</b>
IDX:IDX NONCYC	639.3	<b>2.36%</b>
IDX:IDX INDUST	949.5	<b>2.74%</b>
IDX:IDX INFRA	1,249.0	<b>3.11%</b>
IDX:IDX PROPERT	670.9	<b>2.60%</b>
IDX:IDX TECHNO	7,551.1	<b>2.67%</b>
IDX:IDX TRANS	1,141.0	<b>4.00%</b>

Commodities	Last	Change %
Crude Oil Nov 24	68.3	<b>0.10%</b>
Brent Crude Oil	71.6	<b>0.13%</b>
Gold Dec 24	2684.5	<b>0.61%</b>
Copper Dec 24	4.7	<b>1.64%</b>

Indeks	Close	Change %
Dow Jones Industrial Average	42,455	<b>-0.31%</b>
S&P 500	5,712	<b>-1.12%</b>
NASDAQ Composite	17,899	<b>-2.04%</b>
FTSE 100	8,690	<b>0.30%</b>
DAX PERFORMANCE-INDEX	22,839	<b>-1.17%</b>
IHSG	6,472	<b>3.80%</b>
HANG SENG INDEX	23,483	<b>0.00%</b>
Nikkei 225	37,805	<b>-0.58%</b>

Indikator	Tingkat
GDP Growth Rate	<b>0.53</b> percent
GDP Annual Growth Rate	<b>5.02</b> percent
Unemployment Rate	<b>4.91</b> percent
Inflation Rate	<b>-0.09</b> percent
Inflation Rate MoM	<b>-0.48</b> percent
Interest Rate	<b>5.75</b> percent
Balance of Trade	<b>3117</b> USD Million
Current Account	<b>-1145</b> USD Million
Current Account to GDP	<b>-0.3</b> percent of GDP
Government Debt to GDP	<b>39.3</b> percent of GDP
Government Budget	<b>-2.3</b> percent of GDP
Business Confidence	<b>12.46</b> points
Manufacturing PMI	<b>53.6</b> points



Source: Trading View, Divisi Research Erdikha

### NEWS HIGHLIGHT

- Berbalik Boncos, Defisit GIAA 2024 Tembus USD3,5 Miliar
- Laba Melejit 103 Persen, BBYB 2024 Berselimut Defisit Rp2,29 Triliun
- Pendapatan Meroket 248 Persen, BRMS 2024 Timbun Defisit USD760,45 Juta
- Rugi Susut, BELI 2024 Bergelimang Defisit Rp26,02 Triliun
- Emiten Milik Aguan (CBDK) Buyback Saham Rp1 Triliun

### NEWS MARKET

Pada hari ini, Kamis (26/3/2025) merupakan hari terakhir aktivitas perdagangan bursa saham, rupiah, dan SBN. Pasar keuangan akan ditutup pada 1 dan 2 April 2025 untuk memperingati Hari Raya Idul Fitri, diikuti dengan cuti bersama pada 3, 4, dan 7 April 2025.

- \*Libur Panjang Pasar Keuangan\***
  - Pasar saham, rupiah, dan SBN akan tutup pada 1-2 April 2025 untuk Idul Fitri, dilanjutkan cuti bersama pada 3, 4, dan 7 April.
  - Perdagangan kembali dibuka pada 8 April 2025.
- \*Sentimen Pasar Sebelum Libur\***
  - Investor menghadapi tekanan dari kebijakan tarif Trump dan perlambatan ekonomi global.
  - Ekonomi mudik diharapkan bisa mendorong aktivitas konsumsi dan mendukung pertumbuhan ekonomi.
- \*Kebijakan Tarif Trump\***
  - Presiden AS Donald Trump menerapkan tarif 25% untuk impor mobil yang tidak diproduksi di AS.
  - Kebijakan ini dapat meningkatkan harga kendaraan dan memperburuk ketegangan dagang dengan mitra utama seperti Meksiko, Kanada, Jepang, dan Jerman.
- \*Inflasi PCE AS\***
  - Data inflasi PCE Februari akan diumumkan Jumat ini.
  - Jika inflasi tinggi, pasar keuangan Indonesia berpotensi tertekan setelah libur Lebaran.
- \*IHSG Jelang Lebaran\***
  - IHSG historisnya melemah sebelum Lebaran akibat rendahnya volume transaksi.
  - Tahun ini, penguatan saham BUMN memberi harapan pasar tetap positif.
- \*Pergerakan Rupiah\***
  - Rupiah menguat 0,09% ke Rp16.575 per dolar AS setelah pelemahan tiga hari berturut-turut.
  - Secara historis, rupiah cenderung menguat sebelum Lebaran karena meningkatnya permintaan domestik.
- \*Penurunan Jumlah Pemudik\***
  - Jumlah pemudik diperkirakan hanya 146,48 juta orang, turun 24% dibanding tahun lalu.
  - Faktor penyebab: jarak libur yang berdekatan, kondisi ekonomi, PHK, dan daya beli yang menurun.
- \*Dividen Bank Himbara\***
  - BNI membagikan dividen Rp13,95 triliun (65% dari laba 2024).
  - BTN membagikan dividen Rp751,83 miliar (25% dari laba 2024).
  - Pembagian dividen ini diharapkan memberikan sentimen positif bagi pasar.

Sources : CNBC Indonesia, Trading economic, [kontan.co.id](http://kontan.co.id),

### Stock Recommendation

Stock	Last Price	Recommendation	TP 1	TP 2	Stop Loss	Commentary
BBCA	8,525	Hold	8,675	8,950	8,250	Huge Foreign Buy
BBRI	4,000	Hold	4,080	4,200	3,880	Huge Foreign Buy
LSIP	1,095	Hold	1,115	1,145	1,060	Bullish Harami
SMGR	2,750	Hold	2,800	2,880	2,660	Oversold
ARTO	1,520	Hold	1,550	1,595	1,470	Net Foreign Buy

# NET FOREIGN BUY / SELL



Thursday, March 27, 2025

## NET FOREIGN BUY

CODE	PRICE	Daily (%)	Net Buy ASING	Net Buy Asing BERUNTUN	5 Hari	20 Hari	1 Tahun	PRICE	%	52W Low	CURRENT POSITION	52W High	%
1 BBKA	8,525	5.9%	764.54 B	2				BBKA	8,525	12%	7,625	10,950	-22%
2 BMRI	5,150	8.7%	721.36 B	3				BMRI	5,150	21%	4,250	7,550	-32%
3 BBRI	4,000	5.3%	459.65 B	2				BBRI	4,000	19%	3,360	6,325	-37%
4 BBNI	4,250	9.0%	231.65 B	1				BBNI	4,250	17%	3,630	5,975	-29%
5 ASII	4,800	3.2%	80.77 B	1				ASII	4,800	12%	4,290	5,375	-11%
6 JPFA	2,010	2.8%	38.97 B	18				JPFA	2,010	87%	1,075	2,230	-10%
7 INDF	6,925	1.8%	31.58 B	4				INDF	6,925	18%	5,850	8,300	-17%
8 PTRO	2,430	3.9%	23.79 B	1				PTRO	2,430	517%	394	4,120	-41%
9 FILM	2,710	0.4%	18.59 B	1				FILM	2,710	4%	2,610	5,250	-48%
10 MDKA	1,450	7.4%	16.84 B	1				MDKA	1,450	14%	1,275	2,970	-51%
11 BRPT	680	5.4%	15.63 B	1				BRPT	680	16%	585	1,458	-53%
12 PANI	9,100	7.4%	11.80 B	3				PANI	9,100	96%	4,640	19,650	-54%

## NET FOREIGN SELL

CODE	PRICE	Daily (%)	Net Sell ASING	Net Sell Asing BERUNTUN	5 Hari	20 Hari	1 Tahun	PRICE	%	52W Low	CURRENT POSITION	52W High	%
1 BUKA	143	4.4%	(46.18 B)	2				BUKA	143	34%	107	166	-14%
2 BRIS	2,400	1.3%	(32.37 B)	1				BRIS	2,400	20%	2,000	3,350	-28%
3 UNTR	23,500	3.0%	(22.32 B)	1				UNTR	23,500	11%	21,100	28,500	-18%
4 INKP	4,850	0.6%	(20.17 B)	1				INKP	4,850	7%	4,550	10,000	-52%
5 BRMS	332	1.8%	(15.34 B)	2				BRMS	332	161%	127	505	-34%
6 PWON	348	2.4%	(12.54 B)	1				PWON	348	4%	336	530	-34%
7 KLBF	1,100	-3.1%	(12.20 B)	9				KLBF	1,100	12%	985	1,795	-39%
8 AMMN	5,200	1.5%	(12.20 B)	4				AMMN	5,200	3%	5,025	15,000	-65%
9 AKRA	1,105	-2.6%	(11.90 B)	8				AKRA	1,105	7%	1,030	1,865	-41%
10 ADRO	1,840	5.4%	(10.32 B)	9				ADRO	1,840	10%	1,680	4,300	-57%
11 WIFI	1,790	1.1%	(10.22 B)	2				WIFI	1,790	1298%	128	2,730	-34%
12 NISP	1,335	1.1%	(8.56 B)	4				NISP	1,335	13%	1,180	1,445	-8%

### KETERANGAN

- Net Buy Asing BERUNTUN** : Kondisi di mana investor asing terus menerus membeli saham dalam jumlah lebih besar daripada yang mereka BELI selama beberapa hari berturut-turut
- Net Sell Asing BERUNTUN** : Kondisi di mana investor asing terus menerus membeli saham dalam jumlah lebih besar daripada yang mereka JUAL selama beberapa hari berturut-turut
- 52W Low** : Harga terendah selama 52 Minggu terakhir
- 52W High** : Harga tertinggi selama 52 Minggu terakhir
- %52W Low** : % Kenaikan harga saat ini dibandingkan Harga terendah 52 Minggu terakhir
- %52W High** : % Penurunan harga saat ini dibandingkan Harga tertinggi 52 Minggu terakhir

# ACCUMULATION UPTREND



Thursday, March 27, 2025

CODE	PRICE	Daily (%)	5 Hari	20 Hari	1 Tahun
1 PTRO	2,430	3.9%			
2 GOTO	83	5.1%			
3 ASII	4,800	3.2%			
4 ADRO	1,840	5.4%			
5 DSSA	42,600	0.7%			
6 AADI	6,575	3.1%			
7 ANTM	1,650	3.1%			
8 RATU	4,340	3.8%			
9 INDF	6,925	1.8%			
10 EXCL	2,250	0.9%			
11 JPFA	2,010	2.8%			
12 ICBP	10,550	1.7%			
13 SMIL	370	12.1%			
14 MINE	#N/A	#N/A	#N/A	#N/A	#N/A
15 MEDC	1,030	5.1%			
16 ERAA	402	9.8%			
17 CYBR	675	5.5%			
18 TAPG	870	3.0%			
19 CPIN	4,480	1.8%			
20 EMTK	530	6.4%			
21 AYAM	143	0.7%			
22 UNIQ	540	-1.8%			
23 LSIP	1,095	2.3%			
24 HRTA	470	1.3%			
25 OASA	127	1.6%			

	PRICE	%	52W Low	CURRENT POSITION	52W High	%
PTRO	2,430	517%	394	▼	4,120	-41%
GOTO	83	66%	50	▼	89	-7%
ASII	4,800	12%	4,290	▼	5,375	-11%
ADRO	1,840	10%	1,680	▼	4,300	-57%
DSSA	42,600	279%	11,250	▼	53,200	-20%
AADI	6,575	10%	6,000	▼	11,375	-42%
ANTM	1,650	40%	1,175	▼	1,845	-11%
RATU	4,340	202%	1,435	▼	9,900	-56%
INDF	6,925	18%	5,850	▼	8,300	-17%
EXCL	2,250	9%	2,070	▼	2,650	-15%
JPFA	2,010	87%	1,075	▼	2,230	-10%
ICBP	10,550	10%	9,600	▼	12,875	-18%
SMIL	370	259%	103	▼	500	-26%
MINE	#N/A	#N/A	#N/A	#N/A	#N/A	#N/A
MEDC	1,030	14%	900	▼	1,635	-37%
ERAA	402	29%	312	▼	476	-16%
CYBR	675	160%	260	▼	750	-10%
TAPG	870	67%	520	▼	995	-13%
CPIN	4,480	7%	4,170	▼	5,650	-21%
EMTK	530	51%	350	▼	665	-20%
AYAM	143	93%	74	▼	159	-10%
UNIQ	540	49%	362	▼	790	-32%
LSIP	1,095	46%	750	▼	1,305	-16%
HRTA	470	51%	312	▼	600	-22%
OASA	127	34%	95	▼	161	-21%

Sumber: Research Team Erdikha Elit Sekuritas

## KETERANGAN

- 52W Low : Harga terendah selama 52 Minggu terakhir
- 52W High : Harga tertinggi selama 52 Minggu terakhir
- %52W Low : % Kenaikan harga saat ini dibandingkan Harga terendah 52 Minggu terakhir
- %52W High : % Penurunan harga saat ini dibandingkan Harga tertinggi 52 Minggu terakhir

# TOP PREVIOUS ACCUMULATION



Thursday, March 27, 2025

CODE	PRICE	Daily (%)	Description	*Likuiditas	5 Hari	20 Hari	1 Tahun
1 BBCA	8,525	5.9%	_low risk_				
2 MPMX	975	2.1%	_low risk_	✗			
3 CLEO	1,220	17.9%	*high risk !*				
4 BBNI	4,250	9.0%	_low risk_				
5 ELSA	412	4.6%	_low risk_	✗			
6 BBRI	4,000	5.3%	_low risk_				
7 CPIN	4,480	1.8%	_low risk_				
8 JSMR	4,080	4.6%	_low risk_				
9 BMTR	142	9.2%					
10 TSPC	2,450	4.7%	_low risk_	✗			
11 CBDK	5,075	12.8%	*high risk !*				
12 BMRI	5,150	8.7%	*high risk !*				
13 EXCL	2,250	0.9%	_low risk_				
14 SMGR	2,750	9.6%	*high risk !*				
15 GOTO	83	5.1%	_low risk_				
16 KRAS	132	34.7%	*very high risk !*				
17 ERAA	402	9.8%	_low risk_				
18 MAPA	680	1.5%					
19 MAIN	795	5.3%		✗			
20 BWPT	57	5.6%	_low risk_	✗			
21 BBTN	895	9.2%	_low risk_				
22 ULTJ	1,440	2.1%	_low risk_	✗			
23 PGEO	820	5.1%					
24 DSNG	780	2.6%					
25 CARE	210	1.9%	_low risk_	✗			
26 MPPA	51	2.0%		✗			
27 TLKM	2,440	4.3%	_low risk_				
28 JPFA	2,010	2.8%	_low risk_				
29 ASSA	560	7.7%	_low risk_	✗			
30 CFIN	292	2.8%	_low risk_	✗			
31							

	PRICE	%	52W Low	CURRENT POSITION	52W High	%
BBCA	8,525	12%	7,625	▼	10,950	-22%
MPMX	975	7%	915	▼	1,080	-10%
CLEO	1,220	68%	725	▼	1,755	-30%
BBNI	4,250	17%	3,630	▼	5,975	-29%
ELSA	412	11%	370	▼	545	-24%
BBRI	4,000	19%	3,360	▼	6,325	-37%
CPIN	4,480	7%	4,170	▼	5,650	-21%
JSMR	4,080	15%	3,560	▼	5,700	-28%
BMTR	142	14%	125	▼	260	-45%
TSPC	2,450	31%	1,870	▼	2,900	-16%
CBDK	5,075	18%	4,300	▼	11,450	-56%
BMRI	5,150	21%	4,250	▼	7,550	-32%
EXCL	2,250	9%	2,070	▼	2,650	-15%
SMGR	2,750	31%	2,100	▼	5,950	-54%
GOTO	83	66%	50	▼	89	-7%
KRAS	132	67%	79	▼	179	-26%
ERAA	402	29%	312	▼	476	-16%
MAPA	680	15%	590	▼	1,175	-42%
MAIN	795	63%	488	▼	920	-14%
BWPT	57	14%	50	▼	73	-22%
BBTN	895	19%	755	▼	1,610	-44%
ULTJ	1,440	11%	1,300	▼	2,070	-30%
PGEO	820	16%	705	▼	1,380	-41%
DSNG	780	30%	600	▼	1,400	-44%
CARE	210	275%	56	▼	232	-9%
MPPA	51	2%	50	▼	116	-56%
TLKM	2,440	9%	2,240	▼	3,680	-34%
JPFA	2,010	87%	1,075	▼	2,230	-10%
ASSA	560	17%	480	▼	845	-34%
CFIN	292	11%	262	▼	545	-46%

Sumber: Research Team Erdikha Elit Sekuritas

## KETERANGAN

- \*Likuiditas : ✗ Transaksi dibawah 10Bio
- 52W Low : Harga terendah selama 52 Minggu terakhir
- 52W High : Harga tertinggi selama 52 Minggu terakhir
- %52W Low : % Kenaikan harga saat ini dibandingkan Harga terendah 52 Minggu terakhir
- %52W High : % Penurunan harga saat ini dibandingkan Harga tertinggi 52 Minggu terakhir

# LQ45 TECHNICAL VIEW



Thursday, March 27, 2025

Daily Support & Resistance						Price Performance								
CODE	S2	S1	Price	R1	R2	CODE	Daily (%)	P/E	YTD (%)	%	52W Low	CURRENT POSITION	52W High	%
ACES	488	496	520	535	545	ACES	2.97%	10	-34.2%	7%	486	▼	995	-48%
ADMR	840	865	900	945	960	ADMR	1.12%	5	-25.0%	29%	700	▼	1,585	-43%
ADRO	1,675	1,710	1,840	1,910	1,975	ADRO	5.44%	7	-24.3%	10%	1,680	▼	4,300	-57%
AKRA	1,035	1,070	1,105	1,170	1,185	AKRA	-2.64%	10	-1.3%	7%	1,030	▼	1,865	-41%
AMMN	4,920	5,050	5,200	5,450	5,525	AMMN	1.46%	36	-38.6%	3%	5,025	▼	15,000	-65%
AMRT	1,750	1,815	2,010	2,130	2,230	AMRT	7.49%	27	-29.5%	16%	1,730	▼	3,650	-45%
ANTM	1,575	1,595	1,650	1,685	1,710	ANTM	3.13%	16	8.2%	40%	1,175	▼	1,845	-11%
ARTO	1,380	1,445	1,520	1,645	1,680	ARTO	1.00%	165	-37.4%	24%	1,225	▼	3,220	-53%
ASII	4,510	4,580	4,800	4,940	5,050	ASII	3.23%	6	-2.0%	12%	4,290	▼	5,375	-11%
BBCA	7,925	8,100	8,525	8,850	9,050	BBCA	5.90%	19	-11.9%	12%	7,625	▼	10,950	-22%
BBNI	3,790	3,890	4,250	4,450	4,630	BBNI	8.97%	7	-2.3%	17%	3,630	▼	5,975	-29%
BBRI	3,740	3,800	4,000	4,120	4,220	BBRI	5.26%	10	-2.0%	19%	3,360	▼	6,325	-37%
BBTN	790	815	895	945	985	BBTN	9.15%	4	-21.5%	19%	755	▼	1,610	-44%
BMRI	4,750	4,840	5,150	5,325	5,475	BMRI	8.65%	9	-9.6%	21%	4,250	▼	7,550	-32%
BRIS	2,200	2,260	2,400	2,520	2,590	BRIS	1.27%	16	-12.1%	20%	2,000	▼	3,350	-28%
BRPT	620	635	680	705	725	BRPT	5.43%	68	-26.1%	16%	585	▼	1,458	-53%
CPIN	4,240	4,300	4,480	4,600	4,690	CPIN	1.82%	20	-5.9%	7%	4,170	▼	5,650	-21%
CTRA	730	740	770	790	805	CTRA	3.36%	7	-21.4%	8%	715	▼	1,430	-46%
ESSA	530	545	570	595	605	ESSA	2.70%	13	-29.6%	8%	530	▼	1,010	-44%
EXCL	2,130	2,170	2,250	2,330	2,370	EXCL	0.90%	16	0.0%	9%	2,070	▼	2,650	-15%
GOTO	75	77	83	87	90	GOTO	5.06%	#N/A	18.6%	66%	50	▼	89	-7%
ICBP	10,100	10,200	10,550	10,750	10,925	ICBP	1.69%	15	-7.3%	10%	9,600	▼	12,875	-18%
INCO	2,030	2,100	2,310	2,440	2,540	INCO	6.45%	25	-36.2%	14%	2,020	▼	5,218	-56%
INDF	6,525	6,650	6,925	7,150	7,275	INDF	1.84%	6	-10.1%	18%	5,850	▼	8,300	-17%
INKP	4,690	4,760	4,850	4,980	5,025	INKP	0.62%	5	-28.7%	7%	4,550	▼	10,000	-52%
ISAT	1,385	1,420	1,510	1,580	1,625	ISAT	3.42%	#N/A	-39.1%	15%	1,310	▼	2,994	-50%
ITMG	21,975	22,200	22,950	23,400	23,775	ITMG	2.23%	4	-14.0%	7%	21,400	▼	28,775	-20%
JPFA	1,825	1,890	2,010	2,140	2,200	JPFA	2.81%	8	3.6%	87%	1,075	▼	2,230	-10%
JSMR	3,630	3,770	4,080	4,350	4,500	JSMR	4.62%	7	-5.8%	15%	3,560	▼	5,700	-28%
KLBF	1,055	1,075	1,100	1,135	1,145	KLBF	-3.08%	16	-19.1%	12%	985	▼	1,795	-39%
MAPA	620	640	680	720	740	MAPA	1.49%	13	-36.4%	15%	590	▼	1,175	-42%
MAPI	1,195	1,240	1,325	1,410	1,450	MAPI	1.53%	13	-6.0%	15%	1,155	▼	1,925	-31%
MBMA	272	280	302	316	326	MBMA	4.86%	83	-34.1%	16%	260	▼	725	-58%
MDKA	1,305	1,340	1,450	1,520	1,575	MDKA	7.41%	#N/A	-10.2%	14%	1,275	▼	2,970	-51%
MEDC	950	970	1,030	1,070	1,100	MEDC	5.10%	4	-6.4%	14%	900	▼	1,635	-37%
PGAS	1,435	1,470	1,550	1,620	1,660	PGAS	3.33%	7	-2.5%	22%	1,275	▼	1,725	-10%
PGEO	720	740	820	860	900	PGEO	5.13%	13	-12.3%	16%	705	▼	1,380	-41%
PTBA	2,380	2,420	2,510	2,580	2,620	PTBA	2.45%	5	-8.7%	12%	2,250	▼	3,180	-21%
SIDO	540	545	555	565	570	SIDO	-0.89%	14	-5.9%	8%	515	▼	780	-29%
SMGR	2,290	2,400	2,750	2,960	3,130	SMGR	9.56%	16	-16.4%	31%	2,100	▼	5,950	-54%
SMRA	364	372	392	408	418	SMRA	3.16%	5	-20.0%	7%	366	▼	730	-46%
TLKM	2,260	2,300	2,440	2,520	2,590	TLKM	4.27%	11	-10.0%	9%	2,240	▼	3,680	-34%
TOWR	486	498	525	545	560	TOWR	3.96%	8	-19.8%	6%	496	▼	885	-41%
UNTR	22,275	22,550	23,500	24,050	24,525	UNTR	2.96%	4	-12.2%	11%	21,100	▼	28,500	-18%
UNVR	1,185	1,210	1,240	1,290	1,305	UNVR	-0.40%	14	-34.2%	26%	985	▼	3,390	-63%

Sumber: Research Team Erdikha Elit Sekuritas

# LQ45 PRICE PERFORMANCE



Thursday, March 27, 2025

CODE	PRICE	Daily (%)	PER
GOTO	83	5.06%	
ANTM	1,650	3.13%	16
JPFA	2,010	2.81%	8
EXCL	2,250	0.90%	16
AKRA	1,105	-2.64%	10
BBRI	4,000	5.26%	10
ASII	4,800	3.23%	6
BBNI	4,250	8.97%	7
PGAS	1,550	3.33%	7
JSMR	4,080	4.62%	7
CPIN	4,480	1.82%	20
SIDO	555	-0.89%	14
MAPI	1,325	1.53%	13
MEDC	1,030	5.10%	4
ICBP	10,550	1.69%	15
PTBA	2,510	2.45%	5
BMRI	5,150	8.65%	9
TLKM	2,440	4.27%	11
INDF	6,925	1.84%	6
MDKA	1,450	7.41%	
BBCA	8,525	5.90%	19
BRIS	2,400	1.27%	16
UNTR	23,500	2.96%	4
PGEO	820	5.13%	13
ITMG	22,950	2.23%	4
SMGR	2,750	9.56%	16
KLBF	1,100	-3.08%	16
TOWR	525	3.96%	8
SMRA	392	3.16%	5
CTRA	770	3.36%	7
BBTN	895	9.15%	4
ADRO	1,840	5.44%	7
ADMR	900	1.12%	5
BRPT	680	5.43%	68
INKP	4,850	0.62%	5
AMRT	2,010	7.49%	27
ESSA	570	2.70%	13
MBMA	302	4.86%	83
ACES	520	2.97%	10
UNVR	1,240	-0.40%	14
INCO	2,310	6.45%	25
MAPA	680	1.49%	13
ARTO	1,520	1.00%	165
AMMN	5,200	1.46%	36
ISAT	1,510	3.42%	

	52 WEEK PRICE PERFORMANCE	YTD (%)
GOTO		18.57%
ANTM		8.20%
JPFA		3.61%
EXCL		0.00%
AKRA		-1.34%
BBRI		-1.96%
ASII		-2.04%
BBNI		-2.30%
PGAS		-2.52%
JSMR		-5.77%
CPIN		-5.88%
SIDO		-5.93%
MAPI		-6.03%
MEDC		-6.36%
ICBP		-7.25%
PTBA		-8.73%
BMRI		-9.65%
TLKM		-9.96%
INDF		-10.06%
MDKA		-10.22%
BBCA		-11.89%
BRIS		-12.09%
UNTR		-12.23%
PGEO		-12.30%
ITMG		-14.04%
SMGR		-16.41%
KLBF		-19.12%
TOWR		-19.85%
SMRA		-20.00%
CTRA		-21.43%
BBTN		-21.49%
ADRO		-24.28%
ADMR		-25.00%
BRPT		-26.09%
INKP		-28.68%
AMRT		-29.47%
ESSA		-29.63%
MBMA		-34.06%
ACES		-34.18%
UNVR		-34.22%
INCO		-36.19%
MAPA		-36.45%
ARTO		-37.45%
AMMN		-38.64%
ISAT		-39.11%

	PRICE	%	52W Low	CURRENT POSITION	52W High	%
GOTO	83	66%	50		89	-7%
ANTM	1,650	40%	1,175		1,845	-11%
JPFA	2,010	87%	1,075		2,230	-10%
EXCL	2,250	9%	2,070		2,650	-15%
AKRA	1,105	7%	1,030		1,865	-41%
BBRI	4,000	19%	3,360		6,325	-37%
ASII	4,800	12%	4,290		5,375	-11%
BBNI	4,250	17%	3,630		5,975	-29%
PGAS	1,550	22%	1,275		1,725	-10%
JSMR	4,080	15%	3,560		5,700	-28%
CPIN	4,480	7%	4,170		5,650	-21%
SIDO	555	8%	515		780	-29%
MAPI	1,325	15%	1,155		1,925	-31%
MEDC	1,030	14%	900		1,635	-37%
ICBP	10,550	10%	9,600		12,875	-18%
PTBA	2,510	12%	2,250		3,180	-21%
BMRI	5,150	21%	4,250		7,550	-32%
TLKM	2,440	9%	2,240		3,680	-34%
INDF	6,925	18%	5,850		8,300	-17%
MDKA	1,450	14%	1,275		2,970	-51%
BBCA	8,525	12%	7,625		10,950	-22%
BRIS	2,400	20%	2,000		3,350	-28%
UNTR	23,500	11%	21,100		28,500	-18%
PGEO	820	16%	705		1,380	-41%
ITMG	22,950	7%	21,400		28,775	-20%
SMGR	2,750	31%	2,100		5,950	-54%
KLBF	1,100	12%	985		1,795	-39%
TOWR	525	6%	496		885	-41%
SMRA	392	7%	366		730	-46%
CTRA	770	8%	715		1,430	-46%
BBTN	895	19%	755		1,610	-44%
ADRO	1,840	10%	1,680		4,300	-57%
ADMR	900	29%	700		1,585	-43%
BRPT	680	16%	585		1,458	-53%
INKP	4,850	7%	4,550		10,000	-52%
AMRT	2,010	16%	1,730		3,650	-45%
ESSA	570	8%	530		1,010	-44%
MBMA	302	16%	260		725	-58%
ACES	520	7%	486		995	-48%
UNVR	1,240	26%	985		3,390	-63%
INCO	2,310	14%	2,020		5,218	-56%
MAPA	680	15%	590		1,175	-42%
ARTO	1,520	24%	1,225		3,220	-53%
AMMN	5,200	3%	5,025		15,000	-65%
ISAT	1,510	15%	1,310		2,994	-50%

Sumber: Research Team Erdikha Elit Sekuritas

## KETERANGAN

**PER** : PER saat ini dibawah 10 kali

**YTD (%)** : Kinerja harga saat ini dibandingkan dengan harga saham awal tahun 45 saham yang memiliki likuiditas tinggi dan kapitalisasi pasar

**52W Low** : **Harga terendah** selama 52 Minggu terakhir

**52W High** : **Harga tertinggi** selama 52 Minggu terakhir

**LQ45** adalah Indeks yang mengukur kinerja harga dari besar serta didukung oleh fundamental perusahaan yang baik.



# MSCI PRICE PERFORMANCE



Thursday, March 27, 2025

CODE	PRICE	Daily (%)	PER	PRICE	52 WEEK PRICE PERFORMANCE	YTD (%)	PRICE	%	52W Low	CURRENT POSITION	52W High	%
1 GOTO	83	5.06%		GOTO	83	18.57%	GOTO	66%	50	▼	89	-7%
2 ANTM	1,650	3.13%	16	ANTM	1,650	8.20%	ANTM	40%	1,175	▼	1,845	-11%
3 BBRI	4,000	5.26%	10	BBRI	4,000	-1.96%	BBRI	19%	3,360	▼	6,325	-37%
4 ASII	4,800	3.23%	6	ASII	4,800	-2.04%	ASII	12%	4,290	▼	5,375	-11%
5 BBNI	4,250	8.97%	7	BBNI	4,250	-2.30%	BBNI	17%	3,630	▼	5,975	-29%
6 TPIA	7,125	5.17%		TPIA	7,125	-5.00%	TPIA	35%	5,275	▼	11,225	-37%
7 CPIN	4,480	1.82%	20	CPIN	4,480	-5.88%	CPIN	7%	4,170	▼	5,650	-21%
8 ICBP	10,550	1.69%	15	ICBP	10,550	-7.25%	ICBP	10%	9,600	▼	12,875	-18%
9 BMRI	5,150	8.65%	9	BMRI	5,150	-9.65%	BMRI	21%	4,250	▼	7,550	-32%
10 TLKM	2,440	4.27%	11	TLKM	2,440	-9.96%	TLKM	9%	2,240	▼	3,680	-34%
11 INDF	6,925	1.84%	6	INDF	6,925	-10.06%	INDF	18%	5,850	▼	8,300	-17%
12 BBKA	8,525	5.90%	19	BBKA	8,525	-11.89%	BBKA	12%	7,625	▼	10,950	-22%
13 UNTR	23,500	2.96%	4	UNTR	23,500	-12.23%	UNTR	11%	21,100	▼	28,500	-18%
14 KLBF	1,100	-3.08%	16	KLBF	1,100	-19.12%	KLBF	12%	985	▼	1,795	-39%
15 ADRO	1,840	5.44%	7	ADRO	1,840	-24.28%	ADRO	10%	1,680	▼	4,300	-57%
16 BRPT	680	5.43%	68	BRPT	680	-26.09%	BRPT	16%	585	▼	1,458	-53%
17 AMRT	2,010	7.49%	27	AMRT	2,010	-29.47%	AMRT	16%	1,730	▼	3,650	-45%
18 AMMN	5,200	1.46%	36	AMMN	5,200	-38.64%	AMMN	3%	5,025	▼	15,000	-65%

## Sector Weights for Monday, June 3, 2024

Sector	Weight%
Financials	57.94
Materials	12.77
Consumer Staples	8.48
Communication Services	7.6
Industrials	4.59
Energy	3.85
Consumer Discretionary	3.1
Health Care	1.66

## Industry Group Weights for Monday, June 3, 2024

Industry Group Name	Weight%
Banks	57.94
Materials	12.77
Telecommunication Services	7.6
Food Beverage & Tobacco	4.6
Capital Goods	4.59
Energy	3.85
Consumer Discretionary Distribution & Retail	3.1
Consumer Staples Distribution & Retail	2.62
Pharmaceuticals, Biotechnology & Life Sciences	1.66
Household & Personal Products	1.26

## INDONESIA

- MSCI Global Standard Indexes List  
 Additions -  
 Deletions ANTM

- MSCI Small Cap Indexes List  
 Additions : ANTM, CMRY, FILM, INCO, WIKA  
 Deletions : -

## NEXT

November 2024 Index Review  
 o Announcement date: 7 November 2024  
 o Effective date: 27 November 2024

Sumber: Research Team Erdikha Elit Sekuritas

## KETERANGAN

- PER** : PER saat ini dibawah 10 kali
- YTD (%)** : Kinerja harga saat ini dibandingkan dengan harga saham awal tahun
- 52W Low** : **Harga terendah** selama 52 Minggu terakhir
- 52W High** : **Harga tertinggi** selama 52 Minggu terakhir

# IDX80 PERFORMANCE



Thursday, March 27, 2025

260

CODE	PRICE	Daily (%)	PER	52 WEEK PRICE PERFORMANCE	YTD (%)	PRICE	%	52W Low	CURRENT POSITION	52W High	%
GOTO	83	5.06%			18.57%	GOTO	83	66%	50	89	-7%
SCMA	193	1.58%	21		15.57%	SCMA	193	65%	117	244	-21%
BUKA	143	4.38%			14.40%	BUKA	143	34%	107	166	-14%
ANTM	1,650	3.13%	16		8.20%	ANTM	1,650	40%	1,175	1,845	-11%
EMTK	530	6.43%	22		7.72%	EMTK	530	51%	350	665	-20%
JPFA	2,010	2.81%	8		3.61%	JPFA	2,010	87%	1,075	2,230	-10%
NISP	1,335	1.14%	6		1.52%	NISP	1,335	13%	1,180	1,445	-8%
EXCL	2,250	0.90%	16		0.00%	EXCL	2,250	9%	2,070	2,650	-15%
AVIA	400	2.04%	15		0.00%	AVIA	400	19%	336	570	-30%
BTPS	925	3.35%	7		0.00%	BTPS	925	9%	845	1,430	-35%
ERAA	402	9.84%	6		-0.50%	ERAA	402	29%	312	476	-16%
MPMX	975	2.09%	8		-1.02%	MPMX	975	7%	915	1,080	-10%
AKRA	1,105	-2.64%	10		-1.34%	AKRA	1,105	7%	1,030	1,865	-41%
BBRI	4,000	5.26%	10		-1.96%	BBRI	4,000	19%	3,360	6,325	-37%
ASII	4,800	3.23%	6		-2.04%	ASII	4,800	12%	4,290	5,375	-11%
BBNI	4,250	8.97%	7		-2.30%	BBNI	4,250	17%	3,630	5,975	-29%
PGAS	1,550	3.33%	7		-2.52%	PGAS	1,550	22%	1,275	1,725	-10%
BNGA	1,680	1.51%	6		-2.89%	BNGA	1,680	5%	1,600	2,220	-24%
GJTL	1,075	4.88%	3		-4.02%	GJTL	1,075	10%	980	1,490	-28%
BRMS	332	1.84%	143		-4.05%	BRMS	332	161%	127	505	-34%
ELSA	412	4.57%	4		-4.63%	ELSA	412	11%	370	545	-24%
TBIG	1,980	0.76%	28		-5.71%	TBIG	1,980	24%	1,600	2,260	-12%
JSMR	4,080	4.62%	7		-5.77%	JSMR	4,080	15%	3,560	5,700	-28%
CPIN	4,480	1.82%	20		-5.88%	CPIN	4,480	7%	4,170	5,650	-21%
SIDO	555	-0.89%	14		-5.93%	SIDO	555	8%	515	780	-29%
MAPI	1,325	1.53%	13		-6.03%	MAPI	1,325	15%	1,155	1,925	-31%
MEDC	1,030	5.10%	4		-6.36%	MEDC	1,030	14%	900	1,635	-37%
ICBP	10,550	1.69%	15		-7.25%	ICBP	10,550	10%	9,600	12,875	-18%
PTBA	2,510	2.45%	5		-8.73%	PTBA	2,510	12%	2,250	3,180	-21%
BMRI	5,150	8.65%	9		-9.65%	BMRI	5,150	21%	4,250	7,550	-32%
TLKM	2,440	4.27%	11		-9.96%	TLKM	2,440	9%	2,240	3,680	-34%
INDF	6,925	1.84%	6		-10.06%	INDF	6,925	18%	5,850	8,300	-17%
MNCN	248	5.98%	3		-10.14%	MNCN	248	11%	224	404	-39%
MDKA	1,450	7.41%			-10.22%	MDKA	1,450	14%	1,275	2,970	-51%
MIKA	2,270	-1.73%	28		-10.63%	MIKA	2,270	7%	2,130	3,310	-31%
BBCA	8,525	5.90%	19		-11.89%	BBCA	8,525	12%	7,625	10,950	-22%
NCKL	665	3.91%	7		-11.92%	NCKL	665	16%	575	1,085	-39%
BRIS	2,400	1.27%	16		-12.09%	BRIS	2,400	20%	2,000	3,350	-28%
UNTR	23,500	2.96%	4		-12.23%	UNTR	23,500	11%	21,100	28,500	-18%
PGEO	820	5.13%	13		-12.30%	PGEO	820	16%	705	1,380	-41%
MTEL	565	1.80%	22		-12.40%	MTEL	565	4%	545	700	-19%
PWON	348	2.35%	7		-12.56%	PWON	348	4%	336	530	-34%
AUTO	2,000	1.01%	5		-13.04%	AUTO	2,000	11%	1,795	2,620	-24%
PTPP	290	25.00%	4		-13.69%	PTPP	290	34%	216	525	-45%
BSDE	815	1.88%	6		-13.76%	BSDE	815	8%	755	1,340	-39%
ITMG	22,950	2.23%	4		-14.04%	ITMG	22,950	7%	21,400	28,775	-20%
BFIN	800	3.23%	8		-15.34%	BFIN	800	15%	695	1,340	-40%
PNLF	364	11.66%	8		-15.35%	PNLF	364	34%	272	520	-30%
SMGR	2,750	9.56%	16		-16.41%	SMGR	2,750	31%	2,100	5,950	-54%
ASSA	560	7.69%	11		-18.84%	ASSA	560	17%	480	845	-34%
KLBF	1,100	-3.08%	16		-19.12%	KLBF	1,100	12%	985	1,795	-39%
TOWR	525	3.96%	8		-19.85%	TOWR	525	6%	496	885	-41%
SMRA	392	3.16%	5		-20.00%	SMRA	392	7%	366	730	-46%



61	INDY	1,185	2.16%	6
	TKIM	4,730	3.28%	6
55	CTRA	770	3.36%	7
	BBTN	895	9.15%	4
9	GGRM	10,350	4.81%	11
	BMTR	142	9.23%	4
74	SRTG	1,590	3.58%	7
	ADRO	1,840	5.44%	7
55	MYOR	2,090	0.00%	16
	ADMR	900	1.12%	5
28	ENRG	170	1.19%	3
	BRPT	680	5.43%	68
59	INKP	4,850	0.62%	5
	AMRT	2,010	7.49%	27
14	ESSA	570	2.70%	13
	INTP	5,150	7.29%	9
41	HRUM	715	4.38%	5
	HEAL	1,080	3.35%	30
26	MBMA	302	4.86%	83
	ACES	520	2.97%	10
75	UNVR	1,240	-0.40%	14
	INCO	2,310	6.45%	25
61	MAPA	680	1.49%	13
	ARTO	1,520	1.00%	165
78	AMMN	5,200	1.46%	36
	ISAT	1,510	3.42%	
22	PANI	9,100	7.37%	235

INDY		-20.74%
TKIM		-20.84%
CTRA		-21.43%
BBTN		-21.49%
GGRM		-22.03%
BMTR		-22.40%
SRTG		-23.92%
ADRO		-24.28%
MYOR		-24.82%
ADMR		-25.00%
ENRG		-26.09%
BRPT		-26.09%
INKP		-28.68%
AMRT		-29.47%
ESSA		-29.63%
INTP		-30.41%
HRUM		-30.92%
HEAL		-33.74%
MBMA		-34.06%
ACES		-34.18%
UNVR		-34.22%
INCO		-36.19%
MAPA		-36.45%
ARTO		-37.45%
AMMN		-38.64%
ISAT		-39.11%
PANI		-43.13%

INDY	1,185	3%	1,145	▼	1,825	-35%
TKIM	4,730	6%	4,470	▼	9,075	-48%
CTRA	770	8%	715	▼	1,430	-46%
BBTN	895	19%	755	▼	1,610	-44%
GGRM	10,350	8%	9,625	▼	20,200	-49%
BMTR	142	14%	125	▼	260	-45%
SRTG	1,590	30%	1,225	▼	2,880	-45%
ADRO	1,840	10%	1,680	▼	4,300	-57%
MYOR	2,090	5%	1,985	▼	3,010	-31%
ADMR	900	29%	700	▼	1,585	-43%
ENRG	170	14%	149	▼	310	-45%
BRPT	680	16%	585	▼	1,458	-53%
INKP	4,850	7%	4,550	▼	10,000	-52%
AMRT	2,010	16%	1,730	▼	3,650	-45%
ESSA	570	8%	530	▼	1,010	-44%
INTP	5,150	20%	4,290	▼	8,925	-42%
HRUM	715	12%	640	▼	1,590	-55%
HEAL	1,080	10%	980	▼	1,710	-37%
MBMA	302	16%	260	▼	725	-58%
ACES	520	7%	486	▼	995	-48%
UNVR	1,240	26%	985	▼	3,390	-63%
INCO	2,310	14%	2,020	▼	5,218	-56%
MAPA	680	15%	590	▼	1,175	-42%
ARTO	1,520	24%	1,225	▼	3,220	-53%
AMMN	5,200	3%	5,025	▼	15,000	-65%
ISAT	1,510	15%	1,310	▼	2,994	-50%
PANI	9,100	96%	4,640	▼	19,650	-54%

Sumber: Research Team Erdikha Elit Sekuritas

## KETERANGAN

%52W Low	: % Kenaikan harga saat ini dibandingkan Harga terendah 52 Minggu terakhir
%52W High	: % Penurunan harga saat ini dibandingkan Harga tertinggi 52 Minggu terakhir
52W Low	: Harga terendah selama 52 Minggu terakhir
52W High	: Harga tertinggi selama 52 Minggu terakhir
YTD (%)	: Kinerja harga saat ini dibandingkan dengan harga saham awal tahun
PER	: PER saat ini dibawah 10 kali

80 saham yang memiliki likuiditas tinggi dan kapitalisasi pasar

**IDX80** adalah Indeks yang mengukur kinerja harga dari

80 saham yang memiliki likuiditas tinggi dan kapitalisasi pasar

besar serta didukung oleh fundamental perusahaan yang baik.

## LQ 45 Performance

### \*Top Gainer\*

SMGR 2,750 (9.5%)  
BBTN 895 (9.1%)  
BBNI 4,250 (8.9%)  
BMRI 5,150 (8.6%)  
AMRT 2,010 (7.4%)

### \*Top Volume\*

GOTO 83 (44.3 Mn Lot)  
BMRI 5,150 (5.8 Mn Lot)  
BBRI 4,000 (5.4 Mn Lot)  
BBCA 8,525 (2.8 Mn Lot)  
BBNI 4,250 (2.2 Mn Lot)

### \*Top Frekuensi\*

BBRI 4,000 (72k x)  
BMRI 5,150 (68k x)  
BBCA 8,525 (58k x)  
BBNI 4,250 (37k x)  
GOTO 83 (22k x)

### \*Top Loser\*

KLBF 1,100 (-3%)  
AKRA 1,105 (-2.6%)  
SIDO 555 (-0.8%)  
UNVR 1,240 (-0.4%)  
INKP 4,850 (0.6%)

### \*Top Value\*

BMRI 5,150 (2959.9 IDR Bn)  
BBCA 8,525 (2402.9 IDR Bn)  
BBRI 4,000 (2146.9 IDR Bn)  
BBNI 4,250 (961.1 IDR Bn)  
TLKM 2,440 (526.1 IDR Bn)

## All Stock Performance

### \*Top Gainer\*

KRAS 132 (34.6%)  
ADHI 226 (34.5%)  
WTON 86 (34.3%)  
PPRE 68 (33.3%)  
WEGE 67 (28.8%)

### \*Top Volume\*

GOTO 83 (44.3 Mn Lot)  
BUKA 143 (6.8 Mn Lot)  
BMRI 5,150 (5.8 Mn Lot)  
BBRI 4,000 (5.4 Mn Lot)  
BRMS 332 (4 Mn Lot)

### \*Top Frekuensi\*

BBRI 4,000 (72k x)  
BMRI 5,150 (68k x)  
BBCA 8,525 (58k x)  
BBNI 4,250 (37k x)  
PSAB 264 (25k x)

### \*Top Loser\*

TRUS 645 (-24.5%)  
DADA 7 (-12.5%)  
MDRN 7 (-12.5%)  
FLMC 36 (-10%)  
MIRA 9 (-10%)

### \*Top Value\*

BMRI 5,150 (2959.9 IDR Bn)  
BBCA 8,525 (2402.9 IDR Bn)  
BBRI 4,000 (2146.9 IDR Bn)  
BBNI 4,250 (961.1 IDR Bn)  
TLKM 2,440 (526.1 IDR Bn)

# CORPORATE ACTION



Thursday, March 27, 2025

## PENGUMUMAN

### UNUSUAL MARKET ACTIVITY (UMA)

25 Mar	UMA (HITS)
21 Mar	UMA (MIKA)
20 Mar	UMA (MLIA)
19 Mar	UMA (SHIP)
19 Mar	UMA (ITMA)
18 Mar	UMA (BULL)
14 Mar	UMA (KAQI)
14 Mar	UMA (UDNG)
14 Mar	UMA (SMIL)
14 Mar	UMA (SOFA)

### SUSPEND / UNSUSPEND

24 Mar	Penghentian Sementara (FORU)
24 Mar	Pembukaan Kembali (KAQI)
24 Mar	Penghentian Sementara (RONY)
24 Mar	Penghentian Sementara (UDNG)
21 Mar	Penghentian Sementara (KAQI)
20 Mar	Pembukaan Kembali (UDNG)
20 Mar	Pembukaan Kembali (WGSB)
19 Mar	Penghentian Sementara (WGSB)
19 Mar	Penghentian Sementara (UDNG)
13 Mar	Pembukaan Kembali (TIRA)

\*Data pengumuman diambil terakhir pada hari :

Kamis, 27 March 2025 pukul 08:12:46

AO- Disc On

## AKSI KORPORASI

\*17 MARCH 2025!\*

- Public Expose: NICK
- RUPS [Jam 10:00:00]: NICK

.

\*18 MARCH 2025!\*

- Public Expose: HATM
- RUPS [Jam 14:00:00]: PMJS, FASW, CMPP, HATM, CNKO

.

\*19 MARCH 2025!\*

- RUPS [Jam 15:00:00]: SKYB, ERAA, AMAN

.

\*20 MARCH 2025!\*

- RUPS [Jam 10:00:00]: NISP

.

\*21 MARCH 2025!\*

- Cash Dividend [Distribution]: XCID
- RUPS [Jam 10:00:00]: MINA, UANG, DFAM, WINR, BDMN

.

\*24 MARCH 2025!\*

- RUPS [Jam 09:30:00]: TMAS, BBRI, CNMA, MANG, BUVA, MMIX, MERK, G

.

\*25 MARCH 2025!\*

- RUPS [Jam 09:00:00]: WOMF, ADMF, BMRI, EXCL, FREN, IFSH, NOBU

.

\*26 MARCH 2025!\*

- RUPS [Jam 14:00:00]: HAIS, SDRA, BBNI, CCSI, BBTN, PALM

.

\*27 MARCH 2025!\*

- RUPS [Jam 09:30:00]: MEGA, WIFI, SICO, BWPT

# ECONOMIC CALENDAR



Monday March 24 2025				Actual	Previous	Consensus	Forecast
4:00 PM	EA	<a href="#">HCOB Manufacturing PMI Flash</a>	MAR		47.6	48	48.3
4:00 PM	EA	<a href="#">HCOB Services PMI Flash</a>	MAR		50.6	51	51.1
8:45 PM	US	<a href="#">S&amp;P Global Manufacturing PMI Flash</a>	MAR		52.7	51.9	52.1
8:45 PM	US	<a href="#">S&amp;P Global Services PMI Flash</a>	MAR		51	51.2	51.1
Tuesday March 25 2025				Actual	Previous	Consensus	Forecast
8:00 PM	US	<a href="#">S&amp;P/Case-Shiller Home Price YoY</a>	JAN		4.50%	4.60%	4.50%
8:05 PM	US	<a href="#">Fed Williams Speech</a>					
9:00 PM	US	<a href="#">CB Consumer Confidence</a>	MAR		98.3	94	94.4
9:00 PM	US	<a href="#">New Home Sales</a>	FEB		0.657M	0.68M	0.66M
9:00 PM	US	<a href="#">New Home Sales MoM</a>	FEB		-10.50%		0.50%
Wednesday March 26 2025				Actual	Previous	Consensus	Forecast
3:30 AM	US	<a href="#">API Crude Oil Stock Change</a>	MAR/21		4.593M		
6:00 PM	US	<a href="#">MBA 30-Year Mortgage Rate</a>	MAR/21		6.72%		
7:30 PM	US	<a href="#">Durable Goods Orders MoM</a>	FEB		3.10%	-0.70%	-1.20%
7:30 PM	US	<a href="#">Durable Goods Orders Ex Transp MoM</a>	FEB		0.00%	0.40%	-0.20%
Thursday March 27 2025				Actual	Previous	Consensus	Forecast
3:00 PM	EA	<a href="#">ECB General Council Meeting</a>					
7:30 PM	US	<a href="#">GDP Growth Rate QoQ Final</a>	Q4		3%	2.30%	2.30%
7:30 PM	US	<a href="#">Corporate Profits QoQ</a>	Q4		-0.40%		-0.90%
7:30 PM	US	<a href="#">GDP Price Index QoQ Final</a>	Q4		1.90%	2.40%	2.40%
7:30 PM	US	<a href="#">Goods Trade Balance Adv</a>	FEB		\$-153.26B	\$-134.6B	\$-136.0B
7:30 PM	US	<a href="#">Initial Jobless Claims</a>	MAR/22		223K	225K	225.0K
7:30 PM	US	<a href="#">Retail Inventories Ex Autos MoM Adv</a>	FEB		0.50%		0.40%
7:30 PM	US	<a href="#">Wholesale Inventories MoM Adv</a>	FEB		0.80%	0.40%	0.60%
9:00 PM	US	<a href="#">Pending Home Sales MoM</a>	FEB		-4.60%		2.90%
9:00 PM	US	<a href="#">Pending Home Sales YoY</a>	FEB		-5.20%		-3.70%
Friday March 28 2025				Actual	Previous	Consensus	Forecast
1:05 AM	EA	<a href="#">ECB President Lagarde Speech</a>					
3:30 AM	US	<a href="#">Fed Barkin Speech</a>					
5:00 PM	EA	<a href="#">Economic Sentiment</a>	MAR		96.3	97	96.9
7:30 PM	US	<a href="#">Core PCE Price Index MoM</a>	FEB		0.30%	0.30%	0.40%
7:30 PM	US	<a href="#">Personal Income MoM</a>	FEB		0.90%	0.40%	0.30%
7:30 PM	US	<a href="#">Personal Spending MoM</a>	FEB		-0.20%	0.60%	0.50%
7:30 PM	US	<a href="#">PCE Price Index MoM</a>	FEB		0.30%	0.30%	0.40%
7:30 PM	US	<a href="#">PCE Price Index YoY</a>	FEB		2.50%		2.70%

# DISCLAIMER



Telp : +62 21 3983 6420

Fax : +62 21 3983 6422

Email:

admin.aonline@erdikha.com

afo.elit@erdikha.com

Career: hrd@erdikha.com

## **SEMARANG**

JL. Sembodro No. 12A, Plomblokan  
Kec. Semarang Utara, Kota Semarang

Jawa Tengah – 50171

WA : +6281808054623

Telp : +62243512068

## **JAKARTA (Head Office)**

Gedung Sucaco Lt 3

JL. Kebon Sirih Kav. 71

Jakarta Pusat – 10340

Telp : +622139836420

### Disclaimer :

The information contained herein has been compiled from sources that we believe to be reliable. No warranty (express or implied) is made to the accuracy or completeness of the information. All opinions and estimates included in this report constitute our judgment as of this date, without regards to its fairness, and are subject to change without notice. This document has been prepared for general information only, without regards to the specific objectives, financial situation and needs of any particular person who may receive it. No responsibility or liability whatsoever or howsoever arising is accepted in relation to the contents hereof by any company mentioned herein, or any their respective directors, officers or employees. This document is not an offer to sell or a solicitation to buy any securities. This firms and its affiliates and their officers and employees may have a position, make markets, act as principal or engage in transaction in securities or related investments of any company mentioned herein, may perform services for or solicit business from any company mentioned herein, and may have acted upon or used any of the recommendations herein before they have been provided to you. Available only to person having professional experience in matters relating to investments.